

Texas Property Tax Burden

Matt Migliore

Tax Counsel

Texas Taxpayers and Research Association

400 West 15th Street, Suite 400

Austin, TX 78701

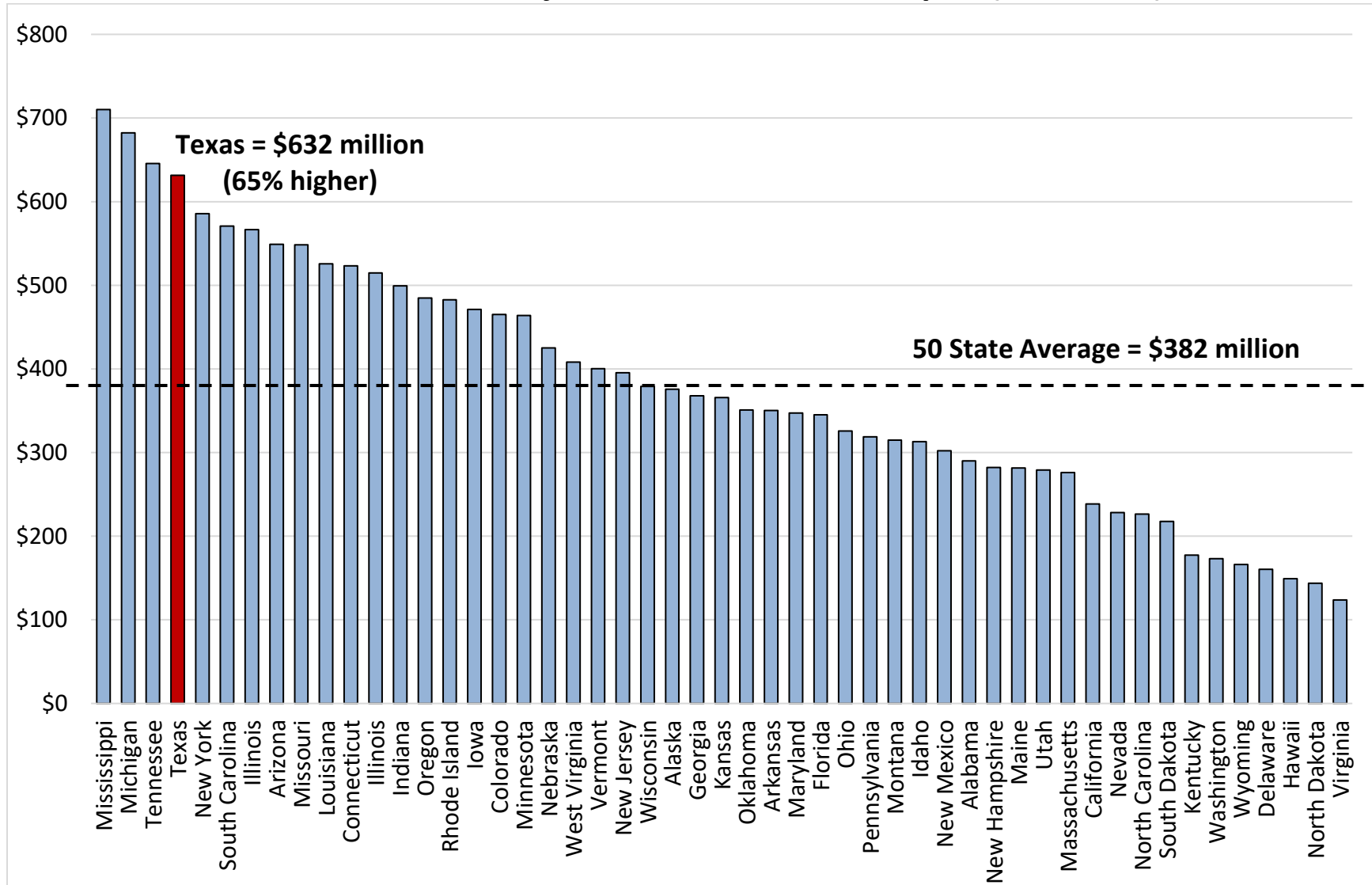
mmigliore@ttara.org

www.ttara.org



Total Property Taxes Due

\$1 Billion Valued Project Over a 25 Year Lifespan (\$ millions)



Source: Derived from Lincoln Institute of Land Policy, 50-State Property Tax Comparison Study, for taxes paid in 2017. April 2018.

Total Property Taxes Levied in Texas, 2016 Tax Year

